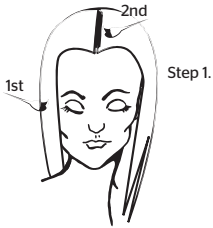


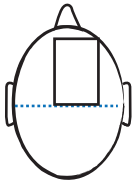
TREND /3

ICY BLONDE//

Natural Base//	7
Full Colour//	1 Part Ice Crème Powder Lightener + 2 parts 3% (10 Vol) Affinage Crème Developer
Toner//	12g 10.21 + 4g Infiniti 10.0 + 16g 6% (20 Vol) Affinage Crème Developer + 16g Water or Infiniti ColourCare Conditioner



Step 1.



Step 2.

STEP/

- 1/** Mix Ice Crème & apply to mid lengths and ends of hair, leaving 1-2 cm ($\frac{3}{8}$ " - $\frac{3}{4}$ ") of the root area untouched, process for 20 minutes. Mix a fresh amount of Ice Crème and apply to the root area. Lighten full head to a level 10, use visual processing.
- 2/** Take a rectangular section off to one side at the top of the head, leaving out the hairline. Apply Infiniti ColourCare Conditioner to the ends of this section.
- 3/** Apply Infiniti 10.21 + 10.0 colour mix, immediately follow with application to the rectangle section. Visual processing applies.

Note: The ends of the rectangle section may be left out for tonal variation.

Styling

Spray on Indigo Defender for protection and softness, follow with a small amount of Indigo Froth. Blow dry and direct hair into place. When dry finish with Indigo Tame It for a soft, conditioned hold.

SHOPPING LIST//



Infiniti
10.21, 10.0



Crème Developer
3% (10 Vol) & 6% (20 Vol)



Ice Crème
Powder Lightener



Infiniti
ColourCare Conditioner



Indigo
Styling & Finishing

AFFINAGE
SALON PROFESSIONAL

affinage.com

For technical information or to contact your nearest distributor call: **UK (+44) 1794 527111 USA (+1) 760 5972929**